

A CLINIC BASED RECIPE FOR ASTHMA HEALTH CARE IMPROVEMENT

Presented by:

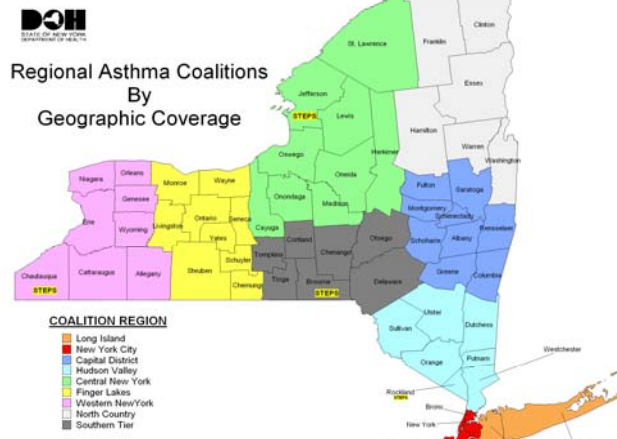
Angela Schimpff, CNY Asthma Coalition Director &
Laurel Cole, Program Assistant

MISSION OF CNY ASTHMA

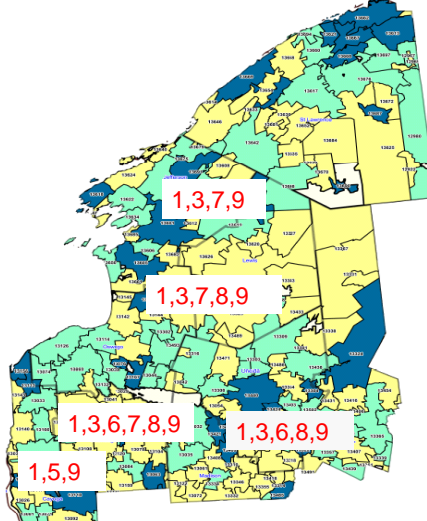
The mission is to decrease ER visits and hospitalizations by educating medical professionals about best practices, as well as, educating patients and their families about good asthma management.

CNY ASTHMA COALITION

CNY Asthma Coalition is a NYSDOH grant funded nonprofit program of the American Lung Association of NY, serving 9 counties in Upstate New York.



**Central New York Asthma Coalition
Asthma Hospital Discharge Rates by Zip Code
for Children (0 - 17 years)**



- KEY (2009)**
- 1-Health care providers (e.g., PCP, Clinics, specialists)
 - 2-Schools
 - 3-SBHCs
 - 4-Daycare
 - 5-EDs
 - 6-Hospitals
 - 7-Community
 - 8- Insurances
 - 9- Home Health Agencies

Asthma Hospital Discharge Rate per 10,000 Children (0 - 17 Years)
 Quartile Distribution of ZIP Codes (New York State Excluding NYC)

0 - < 8.86	Q1 & Q2
8.86 - < 18.0	Q3
18.0+	Q4
No Data Available	

DEMOGRAPHICS OF CNY REGION

- CNY is a large rural region, covering a total of 10,936 square miles.
- There are 3 major cities in the 9 county area
 - Syracuse
 - Watertown
 - Utica
- In many areas of this region people have to travel a great distance to be seen by a specialist.
- The rate of asthma hospitalizations in CNY for ages 0-17 is 12.2 (1119 per 10,000).
- Costs of asthma hospitalizations for NYS are \$535 million an increase of 70% since 1998.*

References:

* NYS Department of Health. NYS Asthma Surveillance Summary Report (October, 2009): pg. 157.

COUNTY DEMOGRAPHICS

City/County	Poverty Level *	Education* High School or Higher	Hosp. D/C Rate ** 0-4 years (per 10,000 population)	Hosp. D/C Rate** 0-14 years (per 10,000 population)	Hosp. D/C Rate** 0-17 years (per 10,000 population)	Asthma: County Death Rate (per 1,000,000 population) **
NYS or Region Total	13.7 % (2008)	79.1 %	CNY Region Total: 29.9 (2007)	CNY Region Total: 14.3 (2007)	CNY Region Total: 12.2 (2007)	CNY Region Total : 8.6 (2007)
Oswego County	15.9%	80.4%	28.4%	14.3%	13.2%	0.0%
Onondaga County	11.7%	85.7%	26.7%	12.7%	10.9%	9%
Oneida County	14.2%	79%	35.3%	15.9%	13.6%	12.2%
Jefferson County	14.6%	82.9%	34.2%	18.0%	15.6%	5.3%

References:

* U.S. Census Bureau. State and County Quick Facts: <http://quickfacts.census.gov/qfd/states/36000.html>

** Asthma Hospital Discharge Data in New York State by Region and County (20032005): http://www.health.state.ny.us/statistics/ny_asthma/infex.htm

*** Public Health Information Group, Center for Community Health, New York State Department of Health. NYS Asthma Surveillance Summary Report (October 2005): page 27.

ASTHMA DEMOGRAPHICS IN CNY

City/County	Zip Code	Poverty Level +	Education* High School or Higher	Hosp. D/C Rate ** 0-4 years (per 10,000 population)	Hosp. D/C Rate** 0-14 years (per 10,000 population)	Hosp. D/C Rate** 0-17 years (per 10,000 population)	Asthma: County Death Rate (per 1,000,000 population) **
NYS or Region Total		13.7 % (2007)	79.1 %	CNY Region Total: 29.9 (2007)	CNY Region Total: 14.3 (2007)	CNY Region Total: 12.2 (2007)	CNY Region Total : 8.6 (2007)
Oswego, Oswego	13126	16.1%	80.4%	38.4	17.9	16.9	8.6
Syracuse, Onondaga County	13205	29.2%	85.7%	43.1	30.4	27.1	9.0
	13202	60.2%		31.6	22.6	22.1	
	13210	48.0%		55.2	23.1	21.0	
	13204	39.8%		53.2	31.6	26.5	
	13208	21.6%		68.9	37.0	31.4	

References:

- + Zip code detailed Profile: <http://www.city-data.com/zips>
- * U.S. Census Bureau. State and County Quick Facts: <http://quickfacts.census.gov/qfd/states/36000.html>
- ** Asthma Hospital Discharge Data in New York State by Region and County (20032005): http://www.health.state.ny.us/statistics/ny_asthma/index.htm
- *** Public Health Information Group, Center for Community Health, New York State Department of Health. NYS Asthma Surveillance Summary Report (October 2005): page 27.

TARGET POPULATION

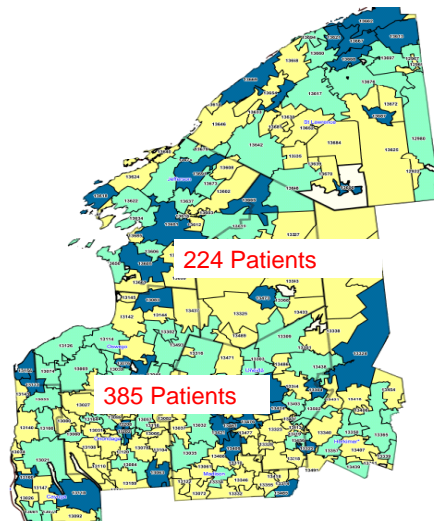


- **Children with asthma, and their families, in SBHC's, Clinics, ER's and hospitals.**
- **We chose 5 counties which were high prevalence areas.**
- **Target population is located within organizations that were willing to work with the coalitions.**

PARTNERS

- Oswego County Opportunities Inc.
- School Based Health Centers
- Madison and Irving Pediatrics
- North Medical
- NOCSHI
- Total Care
- Excellus BC/BS
- Dr. Laura Martin
- Respirationics
- Zoetek Medical
- Home Care Agencies in 5 counties
- School Districts
- Providers
- Pharmaceuticals
- County Health Departments
- OCM BOCES
- Tobacco Coalitions
- United Cerebral Palsy
- Childcare Councils
- Pharmacist Society
- Hospitals and ER's

School Based Health Center Project

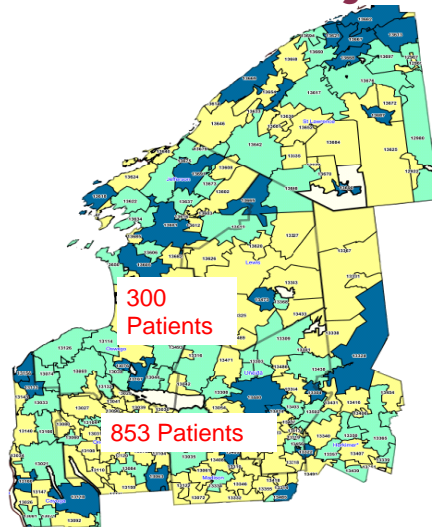


Asthma Hospital Discharge Rate per 10,000 Children (0 - 17 Years)
 Quartile Distribution of ZIP Codes (New York State Excluding NYC)

0 - < 8.86	Q1	Q2
8.86 - < 18.0	Q3	Q4
18.0+	No Data Available	

Target Populations are located in Onondaga County and Oswego County.

PCP Project



The Target Populations are located in Onondaga County and Oswego County.

BARRIERS IN THE REGION

Weather

- Upstate New York is known for its unpredictable snowfall.
- Hazardous driving conditions can limit access to a physicians visit.



BARRIERS IN THE REGION

- ◉ Approximately 50% graduate high school.
- ◉ 15-19% of children live in poverty.
- ◉ Some counties are so rural that it is common that people are not aware of the local county programs/services.
- ◉ Lack of access to primary care providers/specialist

THE RECIPE THAT FOLLOWS THE NIH GUIDELINES

- ◉ Measures of Asthma Assessment and Monitoring
- ◉ Education for a Partnership in Asthma Care
- ◉ Control of Environmental Factors and Co-morbid Conditions That Affect Asthma
- ◉ Medications

FIRST THINGS FIRST.....

We had a good relationship with the SBHC's in Syracuse so we started working on a recipe with them.

SOOOOO.....what did we want to start with?

EDUCATION on the ASTHMA GUIDELINES!!

NOW WHAT?

- We needed to incorporate the asthma guidelines during each asthmatic visit by:
 - Implement an asthma visit flow sheet with check boxes.
 - Properly classify level of control and severity.
 - Prescribe controller medication for persistent asthmatics.
 - Completion and distribution of Asthma Action Plans.
 - Management of flu vaccines for all asthmatic patients.
 - Ensure spirometry testing annually to all asthmatic patients.
 - Continued education to children regarding triggers, medication and emergency management.

MAKING A SYSTEMS CHANGE ASTHMA REGISTRY

- ◉ Enables providers to track asthmatic children
- ◉ Running monthly reports for follow up visits
- ◉ Allows Providers to follow Best Practices
 - ◉ AAP's
 - ◉ Flu Vaccine
 - ◉ Spirometry
 - ◉ Level of Control
 - ◉ Level of Severity
 - ◉ Persistent Asthmatics on Controllers



RESOURCES NEEDED

- ◉ Asthma experts for education sessions
 - AEC's- Providers
- ◉ DOH publications
 - AAP's
 - Educational brochure
- ◉ IT Support
 - Access database
 - Up to date computers
- ◉ Asthma tools
 - Spacers
 - PFM's
 - Placebo medication devices



FUNDS FUNDS FUNDS



IHELP

IN HOME LEARNING AND EDUCATION PROGRAM

- ◉ Started home visit program in 1999.
- ◉ Initiated sustainability in 2007
- ◉ Worked with MCO to reimburse CHHA's for home visits.
- ◉ Worked with CHHA's in 5 counties to implement a home visit that followed NIH guidelines.
- ◉ Each CHHA works with ER's, PCP's and Urgent Care Centers.

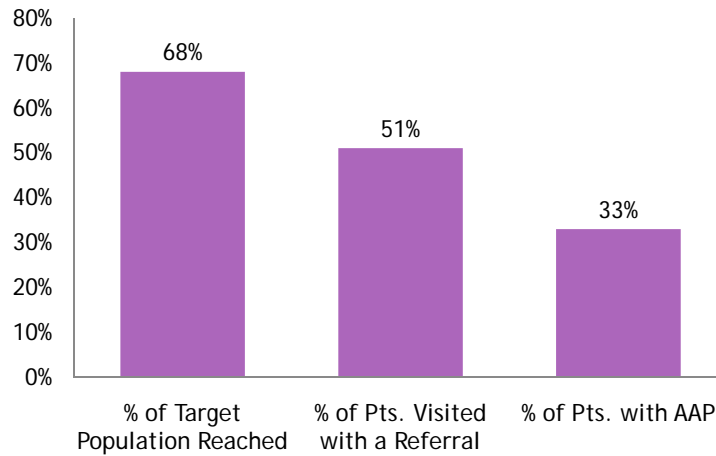
RESULTS FROM IHELP.....

From 1999-2005

- ◉ ER visits decreased by 72%.
- ◉ Hospitalizations decreased by 100%.
- ◉ AAP's increased by 94%.
- ◉ Extended office visits decreased by 63%.
- ◉ 7% increase of days missed school.

IHELP OVERALL RESULTS

FROM 2006-2009

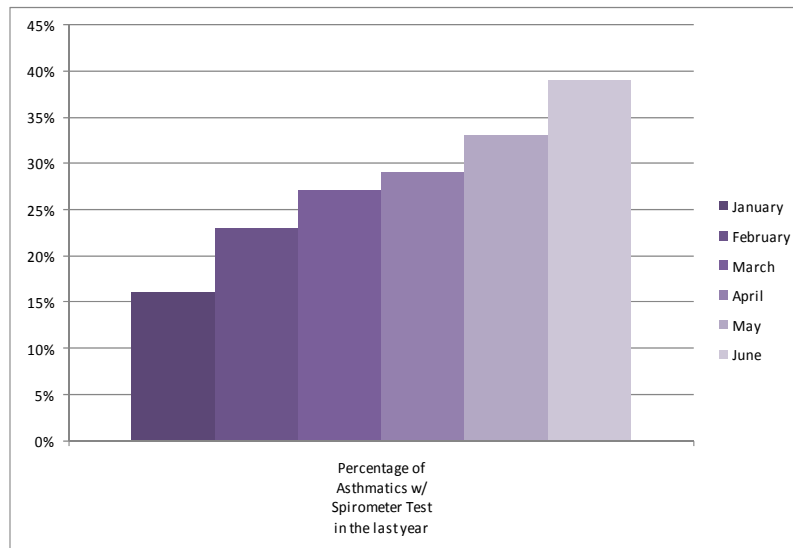


MAKE IT BELIEVABLE!!

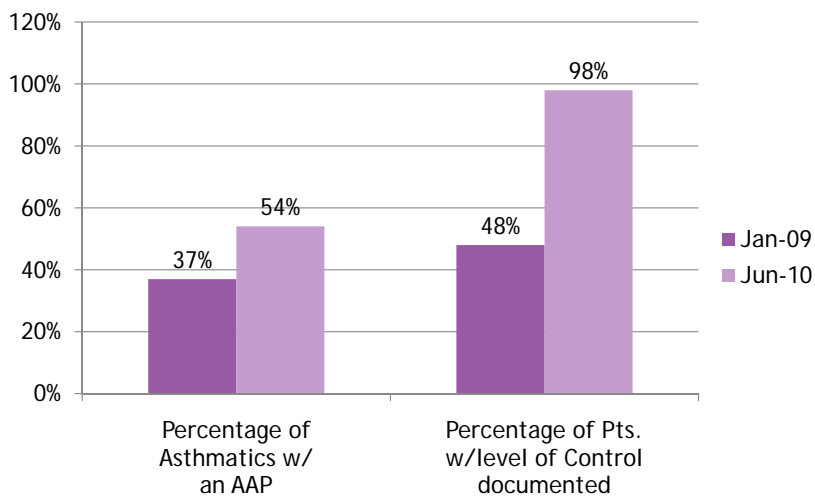


- ✓ 100% of asthmatic children will be part of the registry
- ✓ 80% of asthmatics will have level of severity documented in their charts
- ✓ 90% of children with persistent asthma will be on a controller medication
- ✓ 75% of asthmatics will have an AAP's
- ✓ 100% of asthmatic children will have PFT performed yearly
- ✓ 65 % of asthmatics will have a flu shot

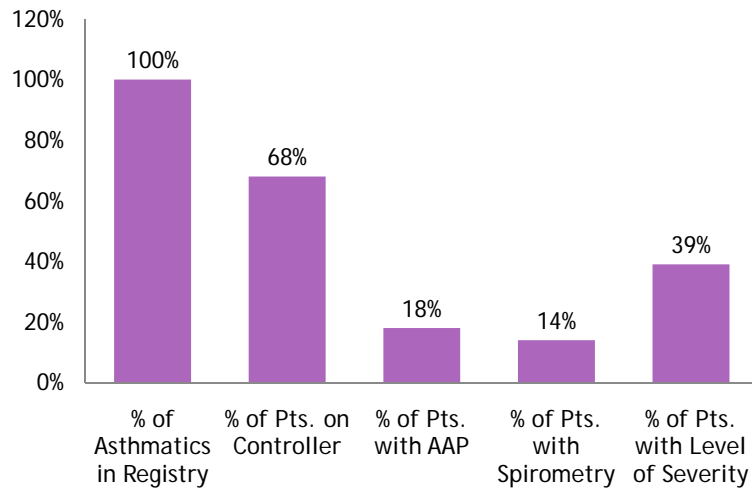
Syracuse SBHC Results for Spirometer Testing



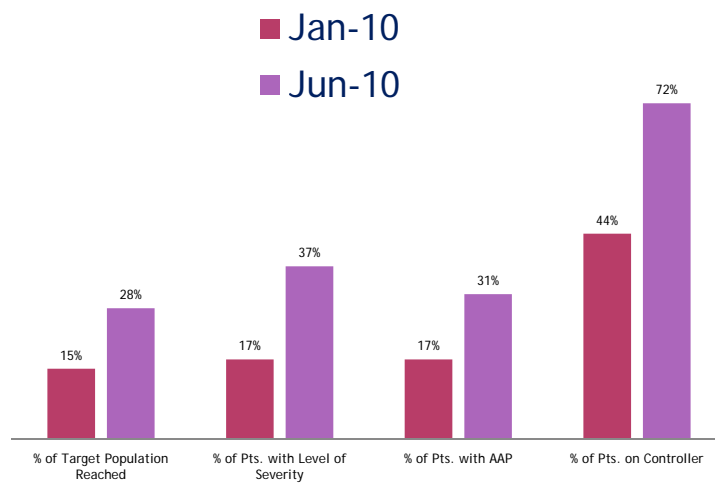
MORE SYRACUSE RESULTS FOR LEVEL OF CONTROL AND ASTHMA ACTIONS PLANS



PULASKI SBHC RESULTS



OCO PCP RESULTS



CRITICAL SUCCESS FACTORS

- ◉ Collaboration between SBHC's, PCP Offices, Medicaid Plans, Home Care Agencies, and the CNY Asthma Coalition.
- ◉ Starting at one center for testing before spread.
- ◉ Populating registry
- ◉ CNY Coalition Focused on
 - Efforts that would impact children in a wide region
 - Best Practices
 - Collaboration with PCP Offices and SBHC

**“Knowing is not enough; we must apply.
Willing is not enough; we must do.”**

-Goethe